

MV – SEA LION



Main Details:

Flag:

PANAMA :

Official Number : 28835-02-B

Homeport : Durban

Classification:

PSR

R 1 + HULL + MACHINERY

Construction / Conversion:

1971 by Chantiers Navals

S.I.C.C.N.A.

Strengthened for ice.

Dimensions:

L.o.a 45.38 Mtrs.

Breadth 10.3 Mtrs.

Depth 6.00 Mtrs.

GRT:

803 Tons.

Speed

9 knots.

Call sign:

H9FM



IMO Number

7115567

Nautical Equipment:

- 1 x Furuno FS-1562-15. 150w RTF/E 1.6-30MHZ
- 2 x VHF Shipmate RS 8400/ASC. 156-163 MHZ
- 1 x VHF Furuno FM – 2710 1/25 w 156-163 MHZ.
- 1 x GPS Furuno GP – 36 1575 .42 MHZ
- 1 x GPS. Furuno GP - 31 1575.42 MHZ
- 1 x Navtex. JRC NCR-330 F1B 518 kHz
- 2 x 2 way VHF Navico Axis 30
- 1 x RTF Skanti TRP-1251S 20w 1.6 – 30MHZ.
- 1 x VHF?DSC Shipmate RS-8400 (352 399 000)
- 1 x Argos FVT-6

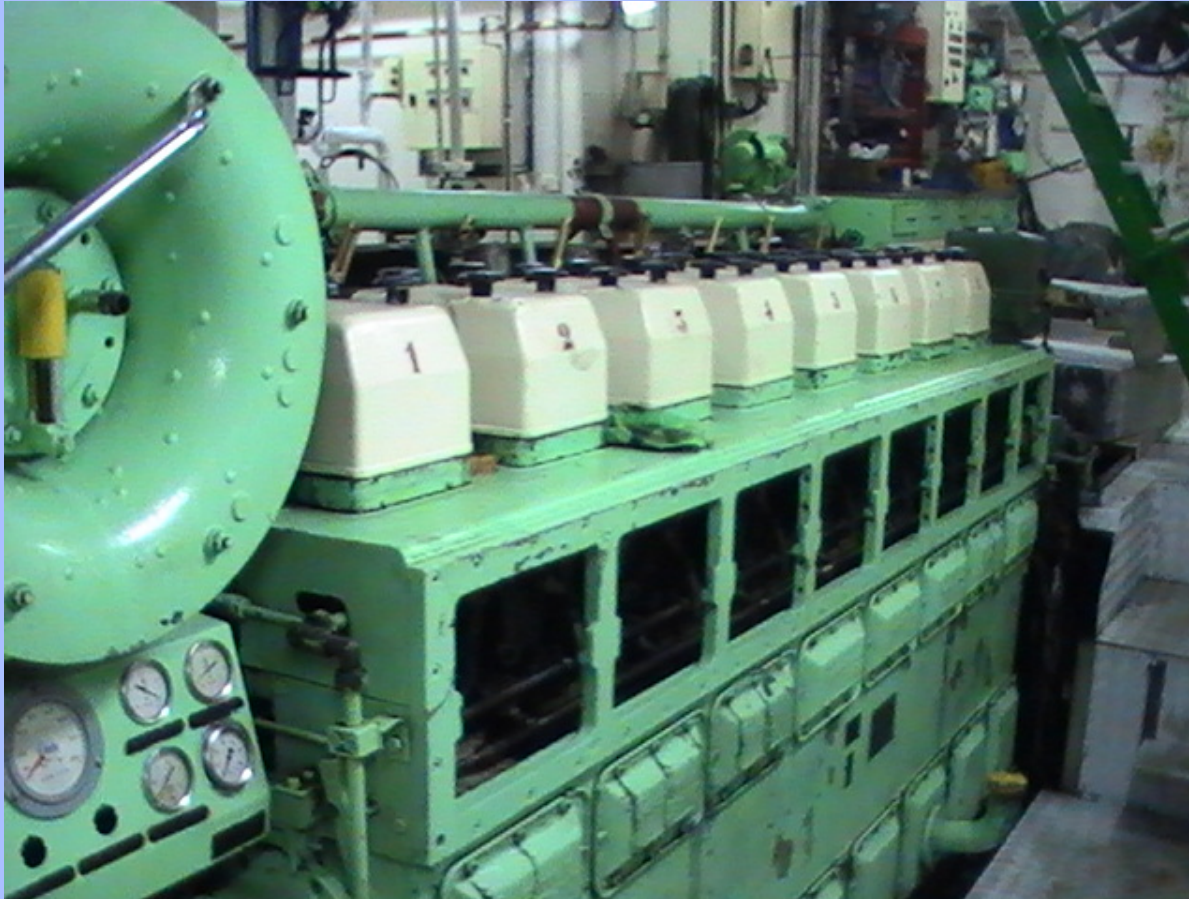
These are the items listed on the Safety Radio Certificate.

The actual installed equipment is in excess of these requirements.

Vessel Contact Numbers

Phone : +8733763223138

Fax : +8733763223139



Mechanical Equipment:

1 x Main Engine , Burmeister & Wain 950 kW
850 rpm
Type 8T 23 LU Serial No. 227, Echevarria
Auxiliary Engines.
1 x Deutz ,type 716 6m, 185 kVa.
2 x Volvo Penta,6 cyl 220 kVa
1 harbour gen-set 35 kVa
2 x firepumps
2 x fresh water generators, one flash evaporator
and one reverse osmosis plant.
2 deck cranes, one fwd. & one serving after
deck.
1 x MOB Boat 25hp
2 x Viking liferafts 25 persons each PLUS 2 x 12
man liferafts mounted at same station.
1 x Gearbox-Reintjes WGV 330 - 480
2 x Steering Pumps
4 x Aircon Units
2 x Fresh water Hydrophores
1x rescue launch with 30hp motor.
2 x inflatable launch work-boats with twin
motors. (Yamaha 2-stroke 3cyl petrol, 40 H.P.)
Refrigerated cargo hold.
Domestic walk-in cold stores.

Bunker Capacity:

400 000 litres Gas Oil.
32.5 m3 Freshwater

Fuel Consumption:

1500 liters/day during Guard Patrol.
4500 liters/day steaming at 10knots



Accommodation:

Large Mess room / Galley.

Separate officer's mess room.

Food storage capacity 30 people for 6 months.

5 x 2 Men Cabins.

2 x 4 Men Cabin

2 x single berth cabins

1 x Cabin for Captain, 1 berths.

3 x shower and Toilet